



Case Study



Park
Royal



Park Royal

Client: Network Homes

Contractor: Hollybrook Homes

Architect: ATP group

Location: Brent

Balconies: 80

Designed by the ATP group, Park Royal is a venture by Network Homes. Hollybrook procured the site located within the Park Royal Town Centre Masterplan, which reforms the area in the centre of the Park Royal adjacent to the Central Middlesex Hospital. It was the first residential scheme within the new Town Centre Masterplan.

Sapphire was commissioned to design and manufacture balconies for this project. The design included a splayed vertical bar used in the railings of the balconies to give every apartment a unique feel. Despite the complex design, Sapphire's innovative team created and delivered the exclusive vertical bars for the balcony railings. Furthermore, our team of experts designed, manufactured, and along with our accredited installers, Steelbuild, successfully installed over 80 balconies, including one over 20M+ long and consisting of seven cassettes joined together.

One significant aspect of this project is that our accredited installers, Steelbuild, did an admirable job matching the Sapphire balcony balustrade with the other concrete terrace railings and external balustrading of the building. With an exceptional design and matching detailing, the Park Royal development is fittingly outstanding.

One of the biggest concerns for Architects with the specification was to ensure that our Sapphire balcony balustrades were matched with the metalwork in the building. Most architects and designers want to make sure the architecture flows seamlessly across the different packages. In the case of this project, the balcony balustrade designs are consistent with the terraces and concrete balconies.

Our close working relations with our accredited installers, SteelBuild, have made the Park Royal project a stunning example of how we have matched our Sapphire balcony balustrades with the other concrete terrace railings and external balustrading of the building.



Challenge

The Park Royal project's central location meant definite space. Its location adjacent to the Central Middlesex Hospital made the installation process tricky. Lorries delivering Sapphire balconies had to stop on the bus lane, meaning no delay in the deliveries of the balconies was a critical need.

With an inadequate lay-down area, off-site manufactured modular balconies were essential.

Another challenge was installing a 20M+ long balcony where seven cassettes were joined to lay between two brick columns. In addition to this, the installation process was delicate as the cranes couldn't slide the balcony smoothly with the tight spacing of the underside.

As a further complexity, the balcony above the main entrance had an additional rainwater downpipe in the building required for the prospect's proper drainage strategy.



Solution



Sapphire balconies arrived on-site with balustrading, soffits, and decks prefinished, which enabled faster installation of the balconies, ensuring that the lorries didn't sit long on the bus lane. Our balconies were pre-slung and ready for installation upon arrival without creating a need for storage space.

To fit the balcony cassettes between the two brick columns, the design team at Sapphire worked long hours to understand how the connections would work best, collaborated with experts at SteelBuild, and trial fitted the balconies in the offsite storage area to ensure a seamless balcony installation process on-site. Additionally, we undertook site-specific regress testing to ensure that our demanding rigidity standards were not compromised even when it was 20M+ long.

Counterbalance lifts were used to install the balconies in the tight spaces.

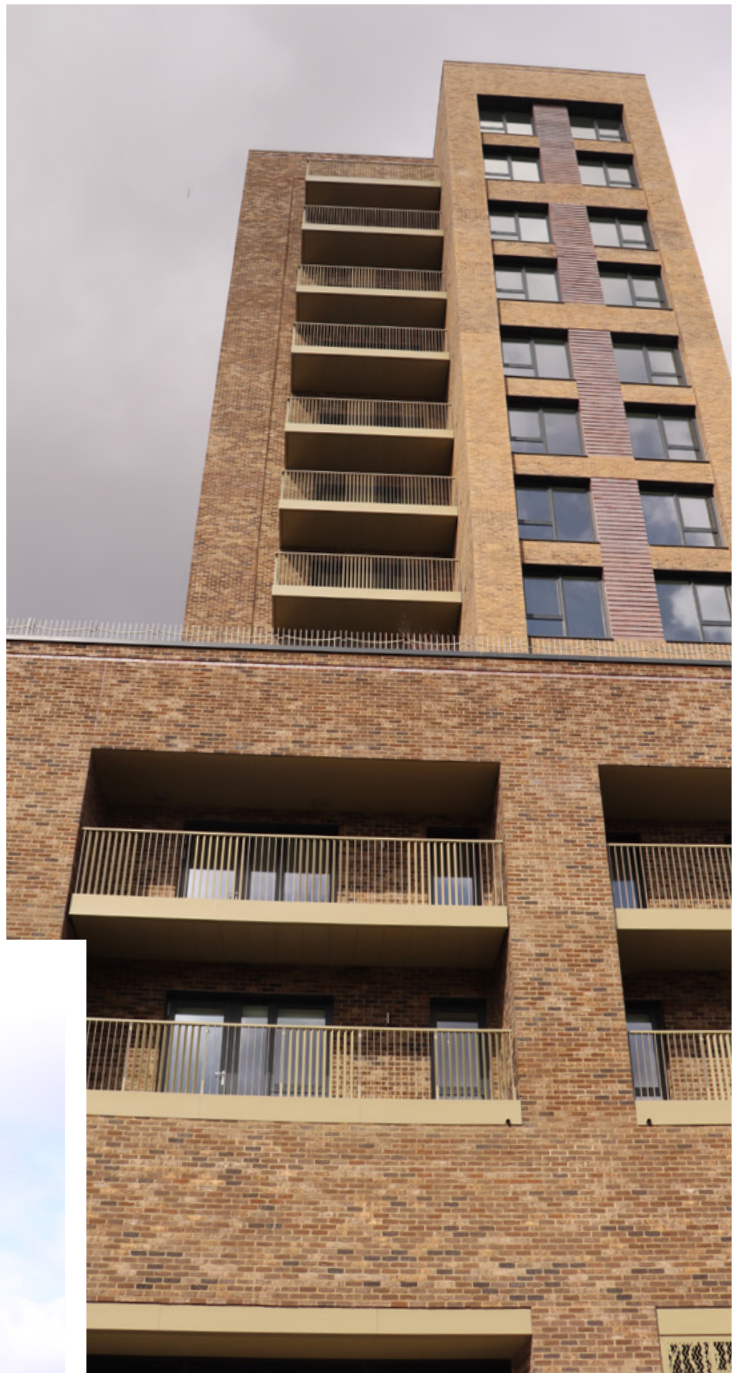
Specially notched soffits were fitted for most of the balconies, so the run of vertical downpipes was not disrupted. Decking cover plates were installed to positively drain the balconies and reduce the risk of water dripping over the entrances.



Rigid.Ready.Right.

- Step 1** Cast in anchors were cast into the slab & incorporated thermal break connections offering superior rigidity to the balconies.
- Step 2** Cassette® balconies were preassembled offsite, including the balustrades, decking & soffits.
- Step 3** Cassette® balconies were transported with balconies 'nested' inside each other, making transport cost-effective, lower footprint & safe. Balconies were pre-slung offsite and ready for installation upon arrival.
- Step 4** Once lifted into position, the Cassettes® simply Glide-On™ to the pre-erected support arms before completing the simple mechanical fixings.





NBS Specification

Park Royal

Manufacturer: Sapphire Balconies Ltd, 11 Arkwright Road, Reading, RG2 0LU
0844 88 00 553
sales@sapphire.eu.com
www.sapphire.eu.com

Reference: Glide-On™ aluminium Cassette® balconies

Balcony anchor: Cast-in anchors incorporating thermal breaks

Arms: 85micron galvanised steel designed to L/360

Cassette® structure: Standard 400mm modular Glide-On™ Cassette® balconies

Soffits: Polyester powder coated aluminium controlled draining soffits. Drainage over doors with pipe drainage to BS 8579:2020

Deck finish: MyDek Aluminium Class A decking fixed with hidden clips

Toprail: Extrusion; 60x30 top rail polyester powder-coated Aluminium, sloped towards balcony for safety

Guarding: 25mm polyester powder-coated Aluminium 40x12 vertical bar, bars angled (splayed) on plan

Base fixing: Mechanically fixed to Cassette®

Fascias Polyester powder-coated Aluminium in front of vertical bars





Sapphire reserves the right to alter specifications and designs without prior notice. Most designs are owned / registered by Sapphire most of which are protected by registered designs, trademarks and patents. All details are given as guidance only and may vary according to project application.

© All rights reserved, no part of this publication may be reproduced in any material form (including photocopying or storing it in any medium by electronic means and whether or not transiently, or incidentally to some other use of this publication) without the written permission of the copyright owner. Application for the copyright owner's permission to reproduce any part of this publication should be addressed to Sapphire.

All facts have been carefully collated and were accurate when researched; these may become out of date. Sapphire takes no responsibility for this. MD010322JM

0344 8800 553
www.sapphire.eu.com
sales@sapphire.eu.com

Sapphire Balconies Ltd
11 Arkwright Road Reading RG2 0LU

