



Case Study

 **SAPPHIRE**

Glenheron,
Wicklow

“ We’re absolutely loving the balcony. It’s the best part of the flat. With where we are on the corner, the balcony gives us sunlight from nearly 6am until late in the evening. ”

Pat, Resident at Glenheron, Wicklow



Glenheron, Wicklow

Client: Cairn PLC

Contractor: Cairn PLC

Architect: Reddy Architecture
and Urbanism

Location: Wicklow, Ireland

Balconies: 94 balconies, 139 lifts



History

Named after the kilometre-stretch of grey stones between the two beaches on the sea-front, Greystones is the second largest town in County Wicklow and the home to “the most liveable community” in the world according to the LivCom Awards, both in 2008 and 2021.

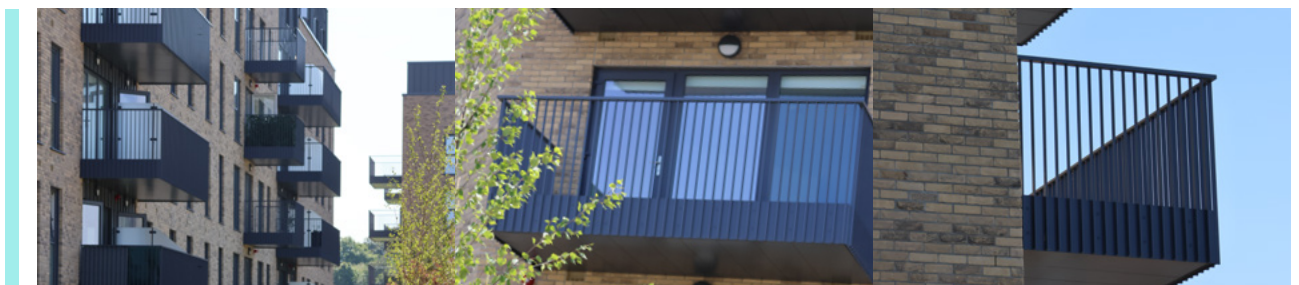
Glenheron is a new development by Cairns, comprising multiple family homes, apartment buildings and residencies. We supplied 94 balconies to this project, streamlining the project by design thanks to early engagement and a good relationship with the team at Cairn.



How Sapphire Made It Simple

Sapphire’s approach to Glenheron was to streamline the efficiency of design. This meant looking into how we could rationalise the design, making it more efficient to not only produce, but install too.

Standardisation and simplicity of design have a reputation for being restrictive, but it also lends itself easily to rationalisation – learning from previous designs and applying



improvements to future designs. These improvements can often mean a large saving, which can be passed on to the customer. Not only that, an architect's design may only need a few adjustments to fit with a standardised product, allowing for unique features to remain in the design.

We worked closely with the contract manager and design manager at Cairn to identify and rectify potential issues and challenges. We were able to minimise logistical movements using clever stacking of lorries when transporting balconies to the site. The project ran incredibly smoothly and we're happy to have supplied the balconies to this fantastic Irish project.



NBS Specification

Glenheron, Wicklow

Manufacturer Sapphire Balconies Ltd 11 Arkwright, Road Reading, RG2 0LU
0344 88 00 553
support@balconies.global
www.balconies.global

Reference Glide-On™ aluminium Cassette® balconies with vertical bar balustrades

Balcony anchor M30 and M16 anchors, fully assembled and cast into concrete slab

Arms 2-piece galvanised steel

Cassette® structure Standard 400mm modular Glide-On™ Cassette® balconies

Soffits Polyester powder-coated aluminium-controlled draining soffits

Deck finish Enjura® composite decking fixed with hidden clips

Toprail 60 x 35mm sloped top anodised aluminium capping to the top of vertical bar balustrades

Guarding 40 x 12 mm flat vertical infill bar balustrades

Base fixing Mechanically fixed to Cassette®

Fascias Polyester powder-coated aluminium fascia trim to conceal vertical bar balustrade fixings/edge of balcony frame



Sapphire reserves the right to alter specifications and designs without prior notice. Most designs are owned / registered by Sapphire most of which are protected by registered designs, trademarks and patents. All details are given as guidance only and may vary according to project application.

© All rights reserved, no part of this publication may be reproduced in any material form (including photocopying or storing it in any medium by electronic means and whether or not transiently, or incidentally to some other use of this publication) without the written permission of the copyright owner. Application for the copyright owner's permission to reproduce any part of this publication should be addressed to Sapphire.

All information has been carefully collated and efforts were made to ensure accuracy at the time of publication. Sapphire takes no responsibility for inaccuracies after the date of publication. MD210524SJE

 0344 8800 553
 www.balconies.global
 support@balconies.global

Sapphire Balconies Ltd
11 Arkwright Road, Reading, RG2 0LU

