



Case Study



The Lighterman,
Greenwich Peninsula

“ I had a very good work experience coordinating with Sapphire - the team was very professional. ”

Project Leader, Carey Jones Chapman Tolcher



GP103 - The Lighterman

Client: Knight Dragon Developments

Contractor: Ardmore Construction

Architect: Carey Jones Chapman Tolcher

Location: Greenwich Peninsula

Balconies: 148 Cassettes®



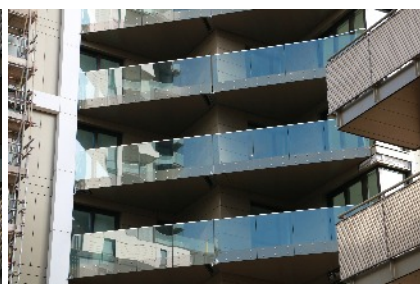
Challenge

The Lighterman project on the Greenwich Peninsula, is a prominent feature on the skyline, reaching 23 storeys up and including some 224 apartments. Essential to the block's developer Knight Dragon, was the speed of delivery and install of balconies, ensuring a seamless blending of balconies and façade and deliverability of their high build specification.







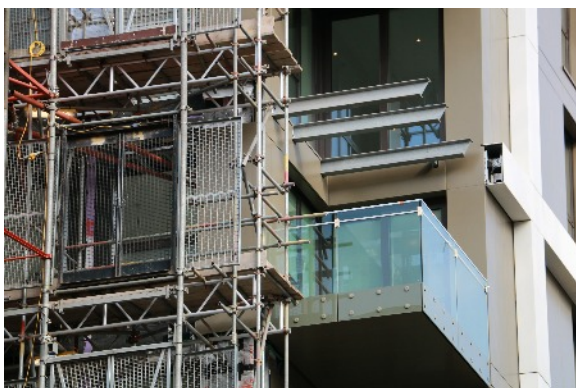
Solution

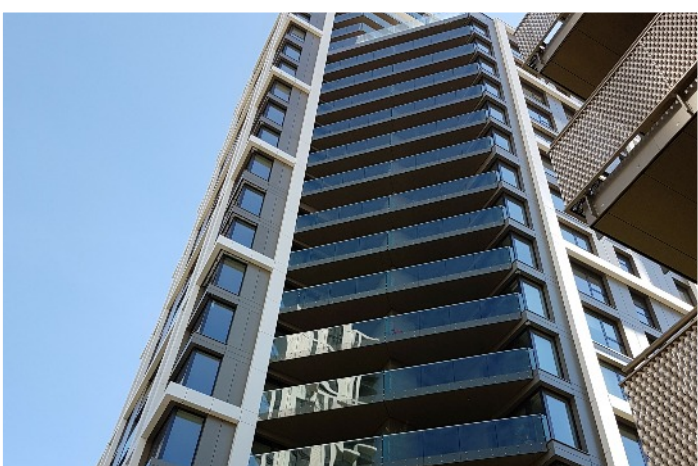
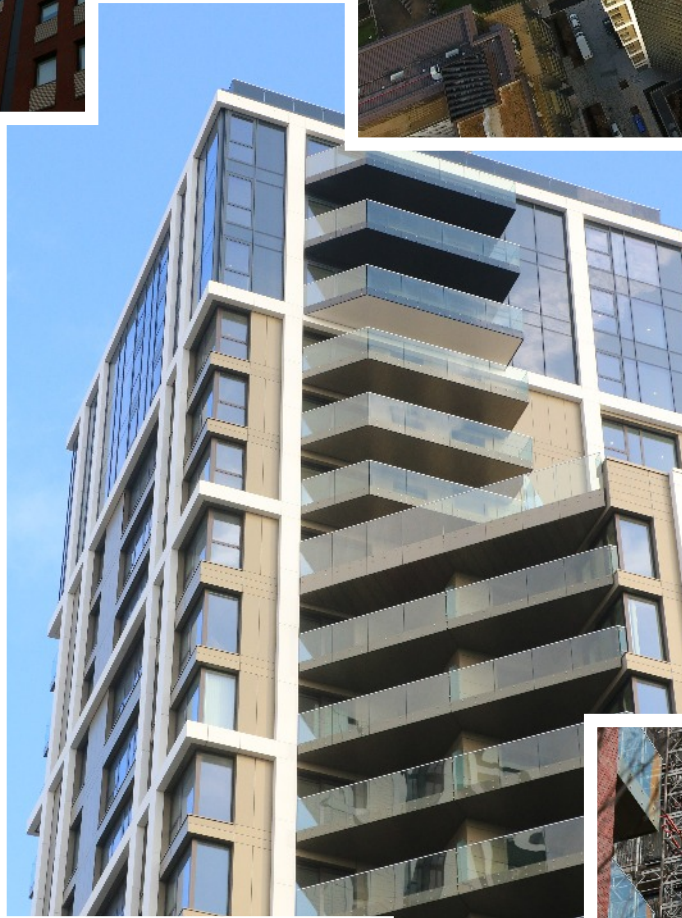
Having early design input into this innovative project, Sapphire was able to offer significant benefits to the project. Glide-On™ Cassette® balconies are lightweight and approximately half the weight of steel alternatives, which can reduce the number of brackets required to connect back to main structure, potentially saving one casting per day when compared to traditional methods. All Sapphire balconies are made offsite, avoiding the hassle of coordinating multiple trades and site storage of materials, as balconies are stored offsite preassembled and delivered when required. Bespoke fascia details were incorporated into the balcony design to enable a blend between balcony and façade. Sapphire were able to meet the build specification by providing advanced and innovative design solutions in the form of 'W' shaped balconies, which were engineered to follow the building line to tight tolerances.



Rigid. Ready. Right.

- Step 1**  Bespoke balcony design incorporated into Sapphire balconies through the use of screen printed bands as fascias to the front of the Cassettes®.
- Step 2**  Sapphire anchors incorporating thermal breaks are cast-in to the slab , pre-fitted with 1-piece steel arms connected to anchor.
- Step 3**  Balconies were manufactured and assembled at Sapphire's Winchester production and storage facility.
- Step 4**  Using Sapphire's innovative Counter Balance Lifter (CBL) balconies were installed rapidly, with installers safely inside the apartments, and without need to install soffits afterwards.





NBS Specification

Greenwich M103

Manufacturer	Sapphire Balconies Ltd 11 Arkwright Road Reading RG2 0LU 0844 88 00 553 sales@sapphire.eu.com www.sapphire.eu.com
Reference	Glide-On™ aluminium Cassette® balconies with Crystal® frameless, structural glass.
Balcony anchor	Sapphire cast-in anchors with permanent edge shutter and thermal break, supplied by Sapphire to be installed by RC Frame Contractor.
Arms	1-piece galvanised steel support arms pre-fitted onto anchor assembly for casting-in.
Cassette® structure	Standard 400mm modular Glide-On™ Cassette® balconies. Factory assembled aluminium slide on cassette with integral deck and free draining soffit.
Soffits	Controlled draining polyester powder coated aluminium with visible colour matched fixings. Balconies with deep fascia also have a secondary soffit at a lower level to line through with the fascia.
Deck finish	Enjura FRS wood/plastic composite decking boards.
Toprail	22 x 22mm (nominal) satin anodised aluminium capping to top of glass only.
Guarding	21.5mm clear toughened and heat soaked laminated structural glass panels with 350mm deep solid screen printed band at base (not faded out up glass)
Base fixing	Mechanically fixed to Cassette® using bobbin point fixings. Powder coated point fixings to blend in with screen printed glass.
Fascias	11 balconies had deep profile fascias to match adjacent facade.





Sapphire reserves the right to alter specifications and designs without prior notice. Most designs are owned / registered by Sapphire most of which are protected by registered designs, trademarks and patents. All details are given as guidance only and may vary according to project application.

© All rights reserved, no part of this publication may be reproduced in any material form (including photocopying or storing it in any medium by electronic means and whether or not transiently, or incidentally to some other use of this publication) without the written permission of the copyright owner. Application for the copyright owner's permission to reproduce any part of this publication should be addressed to Sapphire.

All facts have been carefully collated and were accurate when researched; these may become out of date. Sapphire takes no responsibility for this. MD141118RJC

0344 88 00 553
www.sapphire.eu.com
sales@sapphire.eu.com

Sapphire Balconies Ltd
11 Arkwright Road Reading RG2 0LU