



Case Study

 **SAPPHIRE**[®]

Carnarvon Road

“Hollybrook worked closely with Southend Council to achieve planning permission for 158 one and two bedroom apartments, providing much needed housing within the local area.”

Hollybrook



Carnarvon Road

Client: Hollybrook

Architect: ATP Group

Location: Southend on-Sea

Balconies: 42



Challenge

The main challenge on this project was the intricate design of the balconies to incorporate unique details and a variety of balustrading.

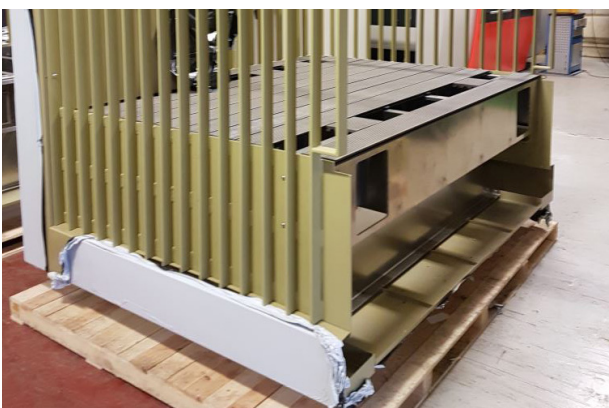
The custom gold colour specified for the balustrades was also a challenge as it could not be achieved with powder coated aluminium to the standard required.



Solution

To achieve the intricate design specified was achieved through a mix of vertical bar and solid panel balustrades. The solid panels featured a unique seashell design laser cut requiring custom programming.

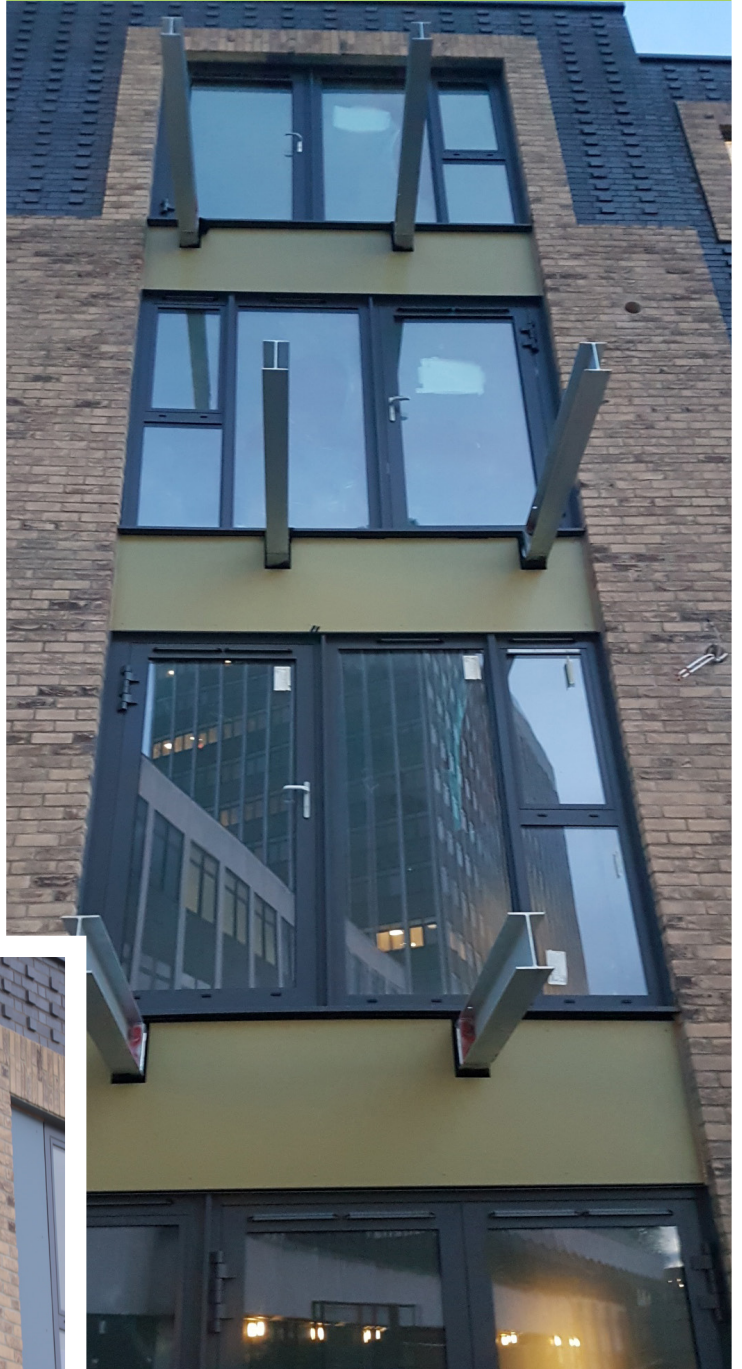
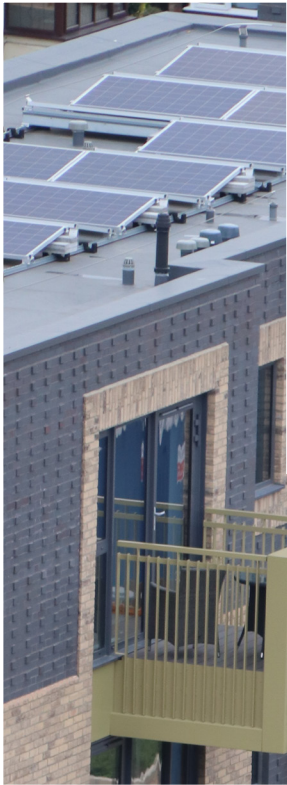
To meet the requirements for the colour of the balustrades hot zinc sprayed and powder coated mild steel was chosen.



Rigid.Ready.Right.

- Step 1** Top-fix anchors were fixed into the precast slab & incorporated thermal break connections offering superior rigidity to the balconies.
- Step 2** Cassette® balconies were preassembled offsite, including the balustrades, decking & soffits.
- Step 3** Cassette® balconies were transported with balconies 'nested' onto each pallet making transport both cost effective & safe. Balconies were pre-slung offsite ready for installation upon arrival.
- Step 4** Once lifted into position, the Cassettes® simply Glide-On™ to the pre-erected support arms, before completing the simple mechanical fixings.





NBS Specification

Carnarvon Road

Manufacturer	Sapphire Balconies Ltd 11 Arkwright, Road Reading, RG2 0LU 0844 88 00 553 sales@sapphire.eu.com www.sapphire.eu.com
Reference:	Glide-On™ aluminium Cassette® balconies with vertical bar and solid panel balustrades.
Balcony anchor:	Top-fix anchors incorporating thermal breaks.
Arms:	2-piece galvanised steel.
Cassette® structure:	Standard 400mm modular Glide-On™ Cassette® balconies.
Soffits:	Polyester powder coated aluminium controlled draining soffits.
Deck finish:	Enjura WPC composite decking fixed with hidden clips.
Toprail:	Hot zinc sprayed and powder coated mild steel
Guarding:	Hot zinc sprayed and powder coated mild steel flat vertical infill bars
Base fixing:	Mechanically fixed to Cassette®
Fascias:	700mm polyester powder coated aluminium fascia trim to conceal edge of balcony frame.





Sapphire reserves the right to alter specifications and designs without prior notice. Most designs are owned / registered by Sapphire most of which are protected by registered designs, trademarks and patents. All details are given as guidance only and may vary according to project application.

© All rights reserved, no part of this publication may be reproduced in any material form (including photocopying or storing it in any medium by electronic means and whether or not transiently, or incidentally to some other use of this publication) without the written permission of the copyright owner. Application for the copyright owner's permission to reproduce any part of this publication should be addressed to Sapphire.

All facts have been carefully collated and were accurate when researched; these may become out of date. Sapphire takes no responsibility for this. MD090120MM

0344 88 00 553
www.sapphire.eu.com
sales@sapphire.eu.com

Sapphire Balconies Ltd
11 Arkwright Road Reading RG2 0LU

